

hidrotren®

NETVITC
SISTEMAS

Sistemas y Tecnología del agua / Water System Technology



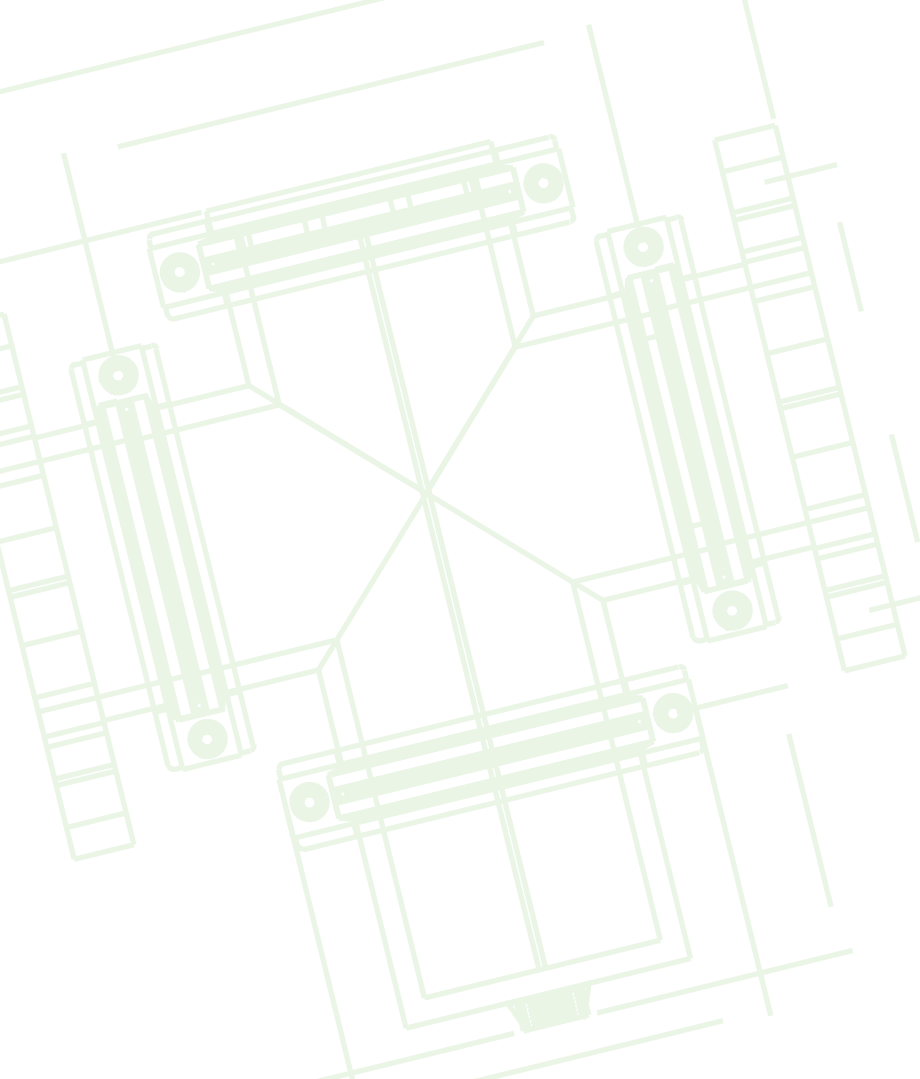
FAMILIA 1NH FAMILY

HIDRANTES NETVITC SYSTEM®

NETVITC SYSTEM® HYDRANTS

SNS

Netvitc System®





Modularidad

La modularidad se convierte en la solución ideal a la hora de plantear el diseño e instalación de hidrantes. Las posibilidades de modificaciones en la estructura de los diseños son prácticamente infinitas, pudiendo adecuarse a las características específicas de cada instalación.

Modularity is the ideal solution in the process of design and installation of hydrants. The possibilities of modifications in the structure of the designs are almost unlimited and they can adapt to the specific characteristics of any installation.



Ligereza

La elección del PPV como material para los accesorios Netvitc System® responde a las necesidades de las instalaciones, aportando un magnífico comportamiento químico, una óptima resistencia frente a las radiaciones solares y las heladas, así como una gran ligereza que permiten grandes ahorros en tiempos de instalación.

The election of GFPP as the material used in Netvitc System® accessories meets the needs of the installations and provides a great chemical performance, an optimal resistance to solar radiation and frosts, as well as a great lightness which save installation time.



Comodidad

La perfecta unión mecánica del sistema Netvitc System® asegura la máxima estanqueidad y su diseño de bridas con 2 tornillos permite una enorme velocidad de instalación. Gran flexibilidad para cambiar la configuración de la instalación según las necesidades, con una facilidad y rapidez inalcanzable para cualquier otro sistema.

The perfect mechanical connection of Netvitc System® guarantees maximum water tightness and its design of flanges with two screws speeds up the installation. It offers a great flexibility to change the setting of the installation according to your needs, as well as an unachievable ease and speed for any other system.

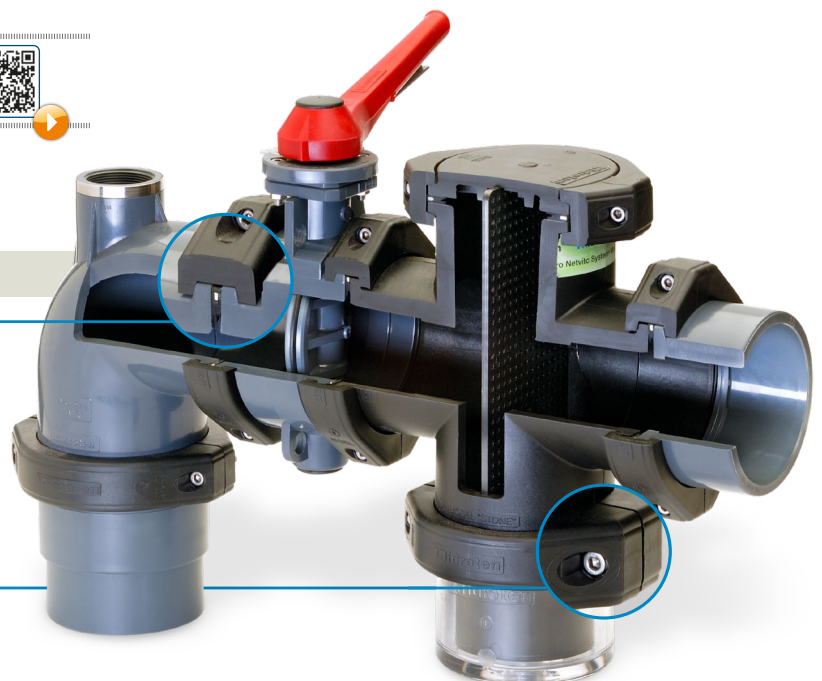


DETALLE SECCIÓN / QUARTERING DETAIL






JUNTA BILABIAL "J-BIL"

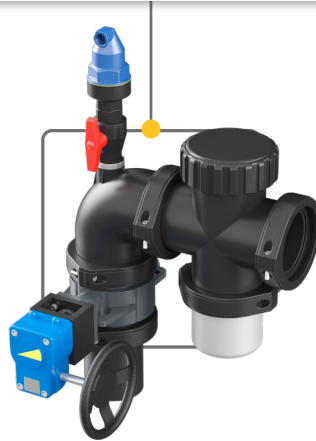
UNIÓN NETVITC SYSTEM®

BRIDA SNS®



COMBINACIÓN DE GAMA / COMBINATION RANGE


				
Válvula Netvitc System® SNS® butterfly valve Ø90 - Ø110	Codo 90° Netvitc System® SNS® 90° elbow Ø90 - Ø110	Cazapiedras "STONE" SNS® SNS® Stone strainer filter Ø90 - Ø110	Cazapiedras vertical SNS® SNS® Stone strainer filter Ø90 - Ø110	Brida Netvitc System® SNS® clamp Ø90 - Ø110



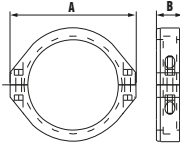
■ La variedad de **TES** con salida roscada, permiten realizar **innumerables configuraciones**, adaptándonos a las necesidades de cada instalación y permitiendo ampliaciones y modificaciones con la máxima sencillez.

■ The variety of tees with threaded outlet, allow for countless configurations, adapting to the needs of each facility and allowing extensions and modifications with the utmost simplicity.

				
Te corta R/H SNS® SNS® F/T short tee Ø90-2" - Ø110-2"	Te corta R/H SNS® "AIR L" "AIR L" SNS® F/T short tee Ø90-2" - Ø110-2"	Te corta R/H SNS® "AIR" "AIR" SNS® F/T short tee Ø90-2" - Ø110-2"	Te doble "AIR" SNS® R/H "AIR" SNS® F/T double tee Ø90-2" - Ø110-2"	Te doble SNS® R/H SNS® F/T double tee Ø90-2" - Ø110-2"

			
---	---	--	---

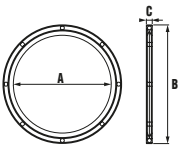
15N



Brida Netvitc System®
Netvitc System® clamp
Bride Netvitc System®

CÓDIGO / CODE	Ø TUBO / PIPE	PESO / WT (g.)	MATERIAL	A	B
1N909	50	110	PPFV	115	36
1N910	63	130	PPFV	125	36
1N911	75	144	PPFV	138	36
1N912	90	304	PA	164	39
1N913	110	345	PA	188	39
1N914	125	507	PA	203	44
1N915	140	569	PA	224	48
1N916	160	815	PA	251	54
1N917	200	1.092	PA	297	59

16N

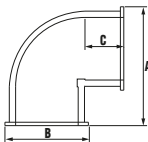


Juntas Netvitc System® "J-BIL"
Netvitc System® "J-BIL" O-ring
Joint Netvitc System® "J-BIL"

CÓDIGO / CODE	Ø JUNTA / O-RING	PESO / WT (g.)	A	B	C
98384	50	22	50	74	5
98355	63*	5	74	88	5
98385	63	30	67	92	5
98356	75*	6	82	97	4
98387	90	53	98	121	6
98388	110	66	120	144	6
98389	125	79	132	159	6
98390	140	92	148	176	6
98391	160	114	173	201	7
98357	200	155	217	248	8

*Sin alma de acero en su interior / Inner inox A-4 ring.

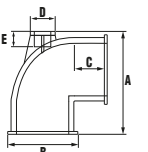
26N



Codo 90° Netvitc System®
Netvitc System® 90 elbow
Coude 90° Netvitc System®

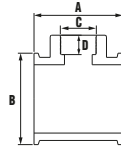
CÓDIGO / CODE	Ø TUBO / PIPE	BRIDA / CLAMP	PESO / WT (g.)	A	B	C
1N205	63	63	212	117	94	36
1N207	90	90	589	159	121	51
1N208	110	110	916	195	144	61
1N209	125	125	1.240	210	159	69
1N210	140	140	1.480	243	176	76
1N211	160	160	2.095	275	201	86
1N212	200	200	3.305	333	251	106

28N



Codo 90° Netvitc System® "AIR" salida R/H
"AIR" Netvitc System® 90° elbow
Coude 90° Netvitc System® "AIR"

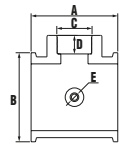
CÓDIGO / CODE	Ø TUBO / PIPE	BRIDA / CLAMP	PESO / WT (g.)	A	B	C	D	E
1N305	63	63	223	129	94	36	1/2"	16
1N307	90	90	604	173	121	51	3/4"	19
1N309	110	110	974	204	144	61	1"	22
1N310	125	125	1.302	243	159	69	2"	38
1N312	160	160	2.510	296	201	86	2"	38
1N313	200	200	3.925	477	251	106	2"	38



53N

Te corta R/H Netvitec System®
 Netvitec System® female threaded short tee
 Té court taraudé Netvitec System®

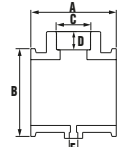
CÓDIGO / CODE	Ø TUBO / PIPE	BRIDA / CLAMP	PESO / WT (g.)	A	B	C	D
1N405	63-1 1/2"	63	190	141	94	1 1/2"	31
1N406	63-2"	63	198	141	116	2"	38
1N577	90-2"	90	566	140	121	2"	38
1N578	110-1"	110	627	140	144	1"	21
1N579	110-1 1/4"	110	647	140	144	1 1/4"	23
1N580	110-1 1/2"	110	690	140	144	1 1/2"	31
1N581	110-2"	110	745	140	144	2"	38



47N

Te corta R/H Netvitec System® "AIR L"
 "AIR L" Netvitec System® 90° female threaded short tee
 Té court taraudé Netvitec System® "AIR L"

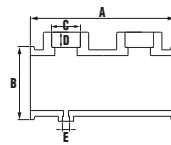
CÓDIGO / CODE	Ø TUBO / PIPE	BRIDA / CLAMP	PESO / WT (g.)	A	B	C	D
1N430	90-2"	90	575	140	121	2"	38 1/4"
1N431	90-2"	90	570	140	121	2"	38 1/2"
1N432	90-2"	90	765	140	121	2"	38 3/4"
1N433	110-2"	110	760	140	144	2"	38 1/4"
1N434	110-2"	110	755	140	144	2"	38 1/2"
1N435	110-2"	110	750	140	144	2"	38 3/4"



48N

Te corta R/H Netvitec System® "AIR"
 "AIR" Netvitec System® 90° female threaded short tee
 Té court taraudé Netvitec System® "AIR"

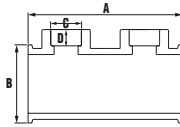
CÓDIGO / CODE	Ø TUBO / PIPE	BRIDA / CLAMP	PESO / WT (g.)	A	B	C	D
1N420	90-2"	90	580	140	121	2"	38 1/4"
1N421	90-2"	90	575	140	121	2"	38 1/2"
1N422	90-2"	90	570	140	121	2"	38 3/4"
1N423	110-2"	110	765	140	144	2"	38 1/4"
1N424	110-2"	110	760	140	144	2"	38 1/2"
1N425	110-2"	110	755	140	144	2"	38 3/4"



57N

Te doble "AIR" Netvitec System® salida R/H
 "AIR" Netvitec System® female threaded double tee
 Te double "AIR" Netvitec System® taraudé

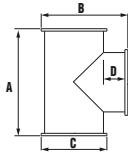
CÓDIGO / CODE	Ø TUBO / PIPE	BRIDA / CLAMP	PESO / WT (g.)	A	B	C	D
1N740	90-2"	90	1.140	286	121	2"	38 1/4"
1N741	90-2"	90	1.130	286	121	2"	38 1/2"
1N742	90-2"	90	1.125	286	121	2"	38 3/4"
1N743	110-2"	110	1.460	286	144	2"	38 1/4"
1N744	110-2"	110	1.465	286	144	2"	38 1/2"
1N745	110-2"	110	1.470	286	144	2"	38 3/4"



49N

Te doble Netvitic System® salida R/H
Netvitic System® female threaded double tee
Te double Netvitic System® taraudé

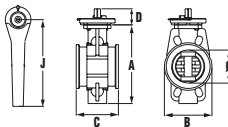
CÓDIGO / CODE	Ø TUBO / PIPE	BRIDA / CLAMP	PESO / WT (g.)	A	B	C	D
1N710	110-1"	90	1.100	286	121	2"	38
1N714	110-1 1/4"	110	1.450	286	144	2"	38



32N

Te 90° Netvitic System®
Netvitic System® 90° Tee
Té 90° Netvitic System®

CÓDIGO / CODE	Ø TUBO / PIPE	BRIDA / CLAMP	PESO / WT (g.)	A	B	C	D
1N245	63	63	252	141	116	94	36
1N247	90	90	782	208	159	121	51
1N248	110	110	1.242	239	195	144	61
1N249	125	125	1.671	277	212	159	69
1N250	140	140	1.920	295	236	177	76
1N251	160	160	2.898	348	267	201	86
1N252	200	200	4.716	408	344	251	106



169

Válvula Netvitic System®
Netvitic System® Valve
Vanne Netvitic System®

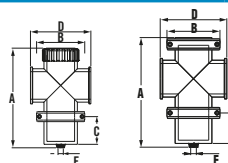
CÓDIGO / CODE	Ø TUBO / PIPE	DN	BRIDA / CLAMP	PESO / WT (g.)	A	B	C	D	J
9N001	63-75	65	75	1.820	189	136	86	45	235
9N002	90	80	90	2.140	213	130	103	45	235
9N003	110	100	110	2.485	233	152	103	45	235
9N004	125	110	125	2.895	244	170	108	45	270
9N005	140	125	140	3.270	264	187	110	45	270
9N006	160	150	160	4.225	286	214	121	45	270
9N007	200-225	200	200	4.710	360	271	138	45	270



Ø90-110



Ø125-200

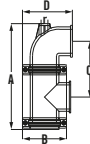


611

Cuerpo cazapiedras
Body strainer
Corps seuil

CÓDIGO / CODE	Ø TUBO / PIPE	Ø AGUJERO / HOLE	BRIDA / CLAMP	PESO / WT (g.)	A	B	C	D	E
8N688	90	5	90	2.010	347	164	110	200	1/2"
8N689	110	5	110	2.811	391	188	120	234	1/2"
8N690	125	5	125	3.813	447	203	153	266	1/2"
8N692	160	5	160	6.515	505	251	153	304	1/2"
8N693	200	5	200	10.434	555	297	153	360	1/2"

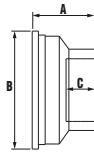
Ø de agujero 5mm de serie, opcional 3mm. / Optional galvanized mesh



Cuerpo cazapiedras
Body strainer
Corps seul

934

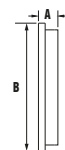
CÓDIGO / CODE	Ø TUBO / PIPE	BRIDA / CLAMP	PESO / WT (g.)	A	B	C	D	r
8N941	90	90	2.624	397	164	210	188	3/4"
8N942	110	110	3.707	456	188	245	211	1"



Conexión R/H- Netvitec System®
Netvitec System® adaptor female threaded
Porte bride taraudée Netvitec System®

18N

CÓDIGO / CODE	Ø TUBO / PIPE	BRIDA / CLAMP	PESO / WT (g.)	A	B	C
1N918	1"	63	102	40	94	36
1N919	1"	90	205	56	121	22
1N920	2"	90	225	58	121	38
1N921	3"	90	275	70	121	51
1N924	2"	110	385	65	144	38
1N926	3"	110	450	78	144	51
1N927	4"	110	470	86	144	62
1N929	2"	125	500	82	159	38
1N930	2 1/2"	125	460	86	159	44
1N931	3"	125	396	86	159	51
1N932	4"	125	477	86	159	62
1N933	3"	140	591	86	177	51
1N934	3"	160	686	86	201	51



Tapón Netvitec System®
Netvitec System® cap
Bouchon Netvitec System®

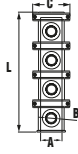
36N

CÓDIGO / CODE	Ø TUBO / PIPE	BRIDA / CLAMP	PESO / WT (g.)	A	B
1N284	50*	50	42	20	74
1N285	63*	63	76	22	92
1N283	63	63	77	24	92
1N287	90	90	176	25	121
1N288	110	110	254	25	144
1N289	125	125	288	25	159
1N290	140	140	365	27	177
1N291	160	160	475	29	201
1N292	200	200	1.080	34	251

*Solo para colectores SNS / Only for SNS® manifolds.

CONEXIÓN NETVITC SYSTEM® / NETVITC SYSTEM® CONNECTION

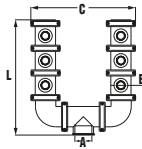
613



Hidrante simple entrada lateral

CÓDIGO / CODE	Ø ENTRADA A	Ø SALIDA / OUTLET B	SALIDAS / OUTLETS MAX.	PESO / WT (g.)	C	L
1NH007	90	2"	3	2.945	164	463
1NH008	110	1"	6	6.158	188	901
1NH009	110	1 1/4"	6	6.278	188	901
1NH010	110	1 1/2"	6	6.536	188	901
1NH011	110	2"	4	4.662	188	609

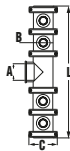
614



Hidrante doble entrada lateral

CÓDIGO / CODE	Ø ENTRADA / INLET A	Ø SALIDA / OUTLET B	SALIDAS / OUTLETS MAX.	PESO / WT (g.)	C	L
1NH027	90	2"	3	6.509	542	525
1NH028	110	1"	6	11.130	672	707
1NH029	110	1 1/4"	6	11.250	672	707
1NH030	110	1 1/2"	6	11.508	672	707
1NH031	110	2"	4	9.634	672	561

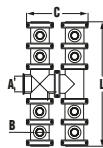
615



Hidrante simple entrada central

CÓDIGO / CODE	Ø ENTRADA / INLET A	Ø SALIDA / OUTLET B	SALIDAS / OUTLETS MAX.	PESO / WT (g.)	C	L
1NH107	90	2"	3	4.617	164	702
1NH108	110	1"	6	8.476	188	1.177
1NH109	110	1 1/4"	6	8.596	188	1.177
1NH110	110	1 1/2"	6	8.854	188	1.177
1NH111	110	2"	4	6.980	188	885

616



Hidrante doble entrada central

CÓDIGO / CODE	Ø ENTRADA / INLET A	Ø SALIDA / OUTLET B	SALIDAS / OUTLETS MAX.	PESO / WT (g.)	C	L
1NH128	110	1"	6	11.870	442	739
1NH129	110	1 1/4"	6	11.990	442	739
1NH130	110	1 1/2"	6	12.248	442	739
1NH131	110	2"	4	10.266	442	593

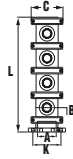
K= distancia entre tornillos (mm)/Distance between bolts (mm)

CONEXIÓN BRIDAS / FLANGES CONNECTION

617



ÚNICO mercado



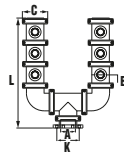
Hidrante simple entrada lateral
conexión brida

CÓDIGO / CODE	Ø ENTRADA / INLET A	Ø SALIDA / OUTLET B	SALIDAS / OUTLETS MAX.	PESO / WT (g.)	C	L	K
1NH307	90	2"	3	3.947	164	523	146-160
1NH308	110	1"	6	7.449	188	971	178-190
1NH309	110	1 1/4"	6	7.569	188	971	178-190
1NH310	110	1 1/2"	6	7.827	188	971	178-190
1NH311	110	2"	4	5.953	188	679	178-190

618



ÚNICO mercado



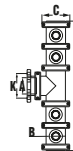
Hidrante doble entrada lateral
conexión brida

CÓDIGO / CODE	Ø ENTRADA / INLET A	Ø SALIDA / OUTLET B	SALIDAS / OUTLETS MAX.	PESO / WT (g.)	C	L	K
1NH327	90	2"	3	7.511	542	585	146-160
1NH328	110	1"	6	12.421	672	777	178-190
1NH329	110	1 1/4"	6	12.541	672	777	178-190
1NH330	110	1 1/2"	6	12.799	672	777	178-190
1NH331	110	2"	4	10.925	672	631	178-190

619



ÚNICO mercado



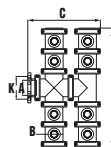
Hidrante simple de entrada central
conexión brida

CÓDIGO / CODE	Ø ENTRADA / INLET A	Ø SALIDA / OUTLET B	SALIDAS / OUTLETS MAX.	PESO / WT (g.)	C	L	K
1NH407	90	2"	3	5.619	164	702	146-160
1NH408	110	1"	6	9.767	188	1177	178-190
1NH409	110	1 1/4"	6	9.887	188	1177	178-190
1NH410	110	1 1/2"	6	10.145	188	1177	178-190
1NH411	110	2"	4	8.271	188	885	178-190

620



ÚNICO mercado



Hidrante doble de entrada central
conexión brida

CÓDIGO / CODE	Ø ENTRADA / INLET A	Ø SALIDA / OUTLET B	SALIDAS / OUTLETS MAX.	PESO / WT (g.)	C	L	K
1NH428	110	1"	6	13.161	512	739	178-190
1NH429	110	1 1/4"	6	13.281	512	739	178-190
1NH430	110	1 1/2"	6	13.539	512	739	178-190
1NH431	110	2"	4	11.557	512	593	178-190

HIDROTEN, S.A.

Polig. I. Plá Vallonga, c/ Agua, 28
03006 ALICANTE (España)
Telf. 965 11 42 82
Fax: 965 11 48 62

I INTERNACIONALES I

Telf. +34 965 11 42 82
Fax: +34 965 11 48 62
Telf. Información Técnica:
+34 966 105 888

www.hidroten.es

I E-mails I

comercial@hidroten.es
export@hidroten.es
administracion@hidroten.es
tecnico@hidroten.es
publicidad@hidroten.es
prescripcion@hidroten.es



¡Síguenos en redes sociales!

