

**hidrotren**<sup>®</sup>

NETVITC  
S.P.A. 1978

Sistemas y Tecnología del agua / Water System Technology



## FAMILIA 01N FAMILY

**SNS**<sup>®</sup>  
Netvitc System



ACC. PRESIÓN NETVITC SYSTEM<sup>®</sup>  
NETVITC SYSTEM<sup>®</sup> PRESSURE FITTINGS





## Unión mecánica Netvitc System®

Netvitc System® es un sistema de unión mecánica basado en la junta “J-Bil” y la brida Netvitc System®, que permite unir entre sí elementos de forma rápida. Su modularidad permite combinar directamente accesorios, válvulas y hacer transiciones de material con importantes ahorros y con la máximas garantías.

Netvitc System® is a mechanical connection system based on the “J-Bil” joint and the Netvitc System® flange, which allow you to easily join elements to each other with little work. As it is a mechanical system, it allows you to insert different models and materials saving a great deal of time and with an improvement of working processes.

## La junta “J-BIL”

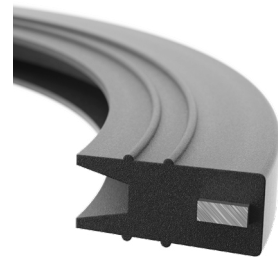
Es el alma del Netvitc System® y como tal, está especialmente creada para trabajar en cualquier condición. Su alma de acero le confiere estabilidad a altas presiones, su diseño bilabial aumenta la estanqueidad con la presión y su superficie con nervios perimetrales asegura un óptimo funcionamiento a bajas presiones.

It is Netvitc System®'s core and was especially created to be used in any condition. Its metallic core makes it stable on high pressures. Its bilabial design increases the sealing as pressure increases and its surface with perimeter nerves ensures an optimal performance on low pressures.

## Modularidad total

El sistema Netvitc System® permite la unión de diferentes elementos hidráulicos (accesorios, válvulas, filtros...) y gracias a las diferentes salidas permite combinar multitud de materiales.

Netvitc System® allows you to join different hydraulic elements (accessories, valves, filters...) as well as combine lots of materials due to its different outlets.



## ENSAYOS / TESTINGS



|  |   |
|--|---|
| <b>SECTOR</b>                                | Piscina, tratamiento de agua, agricultura e industria / <i>Swimming pool, water treatment, agriculture and industry</i>   |
| <b>MATERIAL</b>                              | PVC-U y PPVF / <i>PVC-U &amp; GFPP</i>  |
| <b>JUNTA / GASKET</b>                        | EPDM / INOX A4  |
| <b>PN</b>                                    | PN 10   |
| <b>MEDIDAS CONEXIONES / CONNECTION SIZES</b> | Rosca hembra Ø1" a 4" / <i>Female threaded outlet from Ø1" to 4"</i><br>Encolar Ø40 a 225 / <i>Solvent socket outlet from Ø40 to 225</i><br>PE Ø50 a 225 / <i>PE outlet from Ø50 to 225</i><br>Sistema ranurado Ø2" a 4" / <i>Grooved system outlet from Ø2" to 4"</i><br>Bridas Ø90 a 160 / <i>Clamps outlet from Ø90 to 160</i> |

**SISTEMA DE BRIDAS NETVITC SYSTEM® / NETVITC SYSTEM® FLANGES SYSTEM**

Posibilidad de giro / Turn possibility  
 Unión directa de dos codos / Direct connection by two elbows  
 Posibilidad de desmontaje / Dismountable

Conexión directa codos - válvulas  
 Direct connection elbow-valve

**2 Modelos en 1**, retención y visor.  
 Combinación de salidas PVC- PE.  
 Ligereza en sus modelos.  
 Resistencia ambientes corrosivos.

**Two models in one**, check valve. and fluid display.  
 Outlet combinations PVC-U - PE.  
 Lightness.  
 High resistance corrosive atmosphere.

1. Tubo de Ø110
- 2, 3, 5, 6. Codo 90° Netvitc System®
4. Válvula Mariposa Netvitc System® Ø110
7. Reducción cónica Netvitc System® Ø125-110
8. Válvula de retención cuerpo visor S/termofusión
9. Tubo PE Ø110

**2 Trozos de tubo empleados para realizar la instalación**

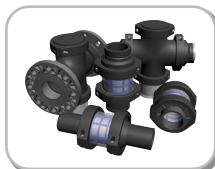
1. Pipe Ø110
- 2, 3, 5, 6. Netvitc System® 90° Elbow solvent socket outlet
4. Netvitc System® butterfly valve Ø110
7. Netvitc System® conical reduction Ø125-110
8. Check valve body W/indicator solvent socket - termofusion outlet
9. PE pipe Ø110

**2 Pieces of pipe used to make the installation**

**GAMA DE FAMILIAS NETVITC SYSTEM® / NETVITC SYSTEM® RANGE OF FAMILIES**



**01N.** Accesorios SNS®  
SNS® Fittings



**08N.** Filtros SNS®  
SNS® Filters



**15.** Válv. retención SNS®  
SNS® Check valve



**01N.** Enlaces SNS®  
SNS® Unions



**09N.** Válv. Mariposa SNS®  
SNS® butterfly valve



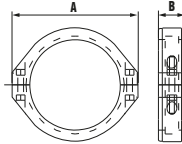
**14.** Válv. aspiración SNS®  
SNS® aspiration valve



**18.** Visor de Líquidos SNS®  
SNS® Fluid display



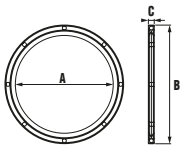
**1NH.** Hidrantes SNS®  
SNS® Hydrants



**Brida Netvitc System®**  
Netvitc System® clamp  
Bride Netvitc System®

15N

| CÓDIGO / CODE | Ø TUBO / PIPE | PESO / WT (g.) | MATERIAL | A   | B  |
|---------------|---------------|----------------|----------|-----|----|
| 1N909         | 50            | 110            | PPFV     | 115 | 36 |
| 1N910         | 63            | 130            | PPFV     | 125 | 36 |
| 1N911         | 75            | 144            | PPFV     | 138 | 36 |
| 1N912         | 90            | 304            | PA       | 164 | 39 |
| 1N913         | 110           | 345            | PA       | 188 | 39 |
| 1N914         | 125           | 507            | PA       | 203 | 44 |
| 1N915         | 140           | 569            | PA       | 224 | 48 |
| 1N916         | 160           | 815            | PA       | 251 | 54 |
| 1N917         | 200           | 1.092          | PA       | 297 | 59 |

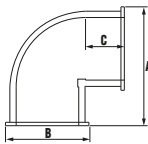


**Juntas Netvitc System® “J-BIL”**  
Netvitc System® “J-BIL” O-ring  
Joint Netvitc System® “J-BIL”

16N

| CÓDIGO / CODE | Ø JUNTA / O-RING | PESO / WT (g.) | A   | B   | C |
|---------------|------------------|----------------|-----|-----|---|
| 98384         | 50               | 22             | 50  | 74  | 5 |
| 98355         | 63*              | 5              | 74  | 88  | 5 |
| 98385         | 63               | 30             | 67  | 92  | 5 |
| 98356         | 75*              | 6              | 82  | 97  | 4 |
| 98387         | 90               | 53             | 98  | 121 | 6 |
| 98388         | 110              | 66             | 120 | 144 | 6 |
| 98389         | 125              | 79             | 132 | 159 | 6 |
| 98390         | 140              | 92             | 148 | 176 | 6 |
| 98391         | 160              | 114            | 173 | 201 | 7 |
| 98357         | 200              | 155            | 217 | 248 | 8 |

\*Sin alma de acero en su interior / Inner inox A-4 ring.

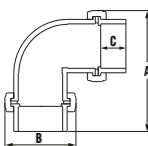


**Codo 90° Netvitc System®**  
Netvitc System® 90 elbow  
Coude 90° Netvitc System®

01N/26N



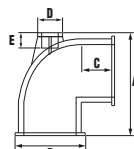
| CÓDIGO / CODE | PESO / WT (g.) | CÓDIGO / CODE | PESO / WT (g.) | Ø TUBO / PIPE | BRIDA / CLAMP | A   | B   | C   |
|---------------|----------------|---------------|----------------|---------------|---------------|-----|-----|-----|
| 1N005         | 283            | 1N205         | 212            | 63            | 63            | 117 | 94  | 36  |
| 1N007         | 814            | 1N207         | 589            | 90            | 90            | 159 | 121 | 51  |
| 1N008         | 1.266          | 1N208         | 916            | 110           | 110           | 195 | 144 | 61  |
| 1N009         | 1.545          | 1N209         | 1.240          | 125           | 125           | 210 | 159 | 69  |
| 1N010         | 2.435          | 1N210         | 1.480          | 140           | 140           | 243 | 176 | 76  |
| 1N011         | 2.910          | 1N211         | 2.095          | 160           | 160           | 275 | 201 | 86  |
| 1N012         | 4.570          | 1N212         | 3.305          | 200           | 200           | 333 | 251 | 106 |



**Codo 90° Netvitc System® C/B**  
Netvitc System® 90° elbow W/F  
Coude 90° Netvitc System® A/B

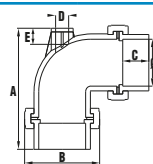
02N

| CÓDIGO / CODE | Ø TUBO / PIPE | BRIDA / CLAMP | PESO / WT (g.) | A   | B   | C   |
|---------------|---------------|---------------|----------------|-----|-----|-----|
| 1N015         | 63            | 63            | 823            | 170 | 125 | 36  |
| 1N017         | 90            | 90            | 2.010          | 227 | 164 | 51  |
| 1N018         | 110           | 110           | 2.900          | 269 | 188 | 61  |
| 1N019         | 125           | 125           | 3.740          | 297 | 203 | 69  |
| 1N020         | 140           | 140           | 5.405          | 346 | 224 | 76  |
| 1N021         | 160           | 160           | 6.590          | 371 | 251 | 86  |
| 1N022         | 200           | 200           | 10.400         | 457 | 297 | 106 |



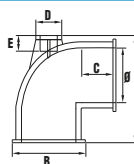
**Codo 90° Netvitec System® "AIR" salida R/H**  
 "AIR" Netvitec System® 90° elbow  
 Coude 90° Netvitec System® "AIR"

| CÓDIGO / CODE | PESO / WT (g.) | CÓDIGO / CODE | PESO / WT (g.) | Ø TUBO / PIPE | BRIDA / CLAMP | A   | B   | C   | D    | E  |
|---------------|----------------|---------------|----------------|---------------|---------------|-----|-----|-----|------|----|
| 1N115         | 297            | 1N305         | 223            | 63            | 63            | 129 | 94  | 36  | 1/2" | 16 |
| 1N117         | 835            | 1N307         | 604            | 90            | 90            | 173 | 121 | 51  | 3/4" | 19 |
| 1N119         | 1.347          | 1N309         | 974            | 110           | 110           | 204 | 144 | 61  | 1"   | 22 |
| 1N121         | 1.675          | 1N310         | 1.302          | 125           | 125           | 243 | 159 | 69  | 2"   | 38 |
| 1N123         | 3.430          | 1N312         | 2.510          | 160           | 160           | 296 | 201 | 86  | 2"   | 38 |
| 1N124         | 5.345          | 1N313         | 3.925          | 200           | 200           | 477 | 251 | 106 | 2"   | 38 |



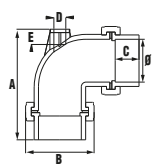
**Codo 90° Netvitec System® "AIR" C/B salida R/H**  
 "AIR" Netvitec System® 90° elbow W/F  
 Coude 90° Netvitec System® "AIR" A/B

| CÓDIGO / CODE | Ø TUBO / PIPE | BRIDA / CLAMP | PESO / WT (g.) | A   | B   | C   | D    | E  |
|---------------|---------------|---------------|----------------|-----|-----|-----|------|----|
| 1N105         | 63            | 63            | 873            | 182 | 125 | 36  | 1/2" | 16 |
| 1N107         | 90            | 90            | 2.031          | 239 | 164 | 51  | 3/4" | 19 |
| 1N109         | 110           | 110           | 2.981          | 276 | 188 | 61  | 1"   | 22 |
| 1N111         | 125           | 125           | 3.995          | 330 | 203 | 69  | 2"   | 38 |
| 1N113         | 160           | 160           | 7.110          | 392 | 251 | 86  | 2"   | 38 |
| 1N114         | 200           | 200           | 11.175         | 601 | 297 | 106 | 2"   | 38 |



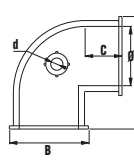
**Codo 90° Netvitec System® "AIR" S/Encolar**  
 "AIR" Netvitec System® 90° elbow s/socket outlet  
 Coude 90° Netvitec System® "AIR" s/femelle à coller

| CÓDIGO / CODE | Ø TUBO / PIPE | BRIDA / CLAMP | PESO / WT (g.) | A   | B   | C   | D  | E  |
|---------------|---------------|---------------|----------------|-----|-----|-----|----|----|
| 1N590         | 90            | 90            | 835            | 173 | 121 | 51  | 25 | 19 |
| 1N592         | 110           | 110           | 1.347          | 204 | 144 | 61  | 32 | 22 |
| 1N594         | 125           | 125           | 1.675          | 243 | 159 | 69  | 63 | 38 |
| 1N596         | 160           | 160           | 3.430          | 296 | 201 | 86  | 63 | 38 |
| 1N597         | 200           | 200           | 5.345          | 477 | 251 | 106 | 63 | 38 |



**Codo 90° Netvitec System® "AIR" C/B S/Encolar**  
 "AIR" Netvitec System® 90° elbow W/F s/socket outlet  
 Coude 90° Netvitec System® "AIR" A/B s/femelle à coller

| CÓDIGO / CODE | Ø TUBO / PIPE | BRIDA / CLAMP | PESO / WT (g.) | A   | B   | C   | D  | E  |
|---------------|---------------|---------------|----------------|-----|-----|-----|----|----|
| 1N610         | 90            | 90            | 2.031          | 239 | 164 | 51  | 25 | 19 |
| 1N612         | 110           | 110           | 2.981          | 276 | 188 | 61  | 32 | 22 |
| 1N614         | 125           | 125           | 3.995          | 330 | 203 | 69  | 63 | 38 |
| 1N616         | 160           | 160           | 7.110          | 392 | 251 | 86  | 63 | 38 |
| 1N617         | 200           | 200           | 11.175         | 601 | 297 | 106 | 63 | 38 |

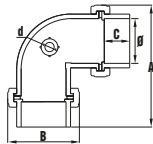


**Codo 90° Netvitec System® "AIR L" Salida R/H**  
 "AIR L" Netvitec System® 90° elbow f/t outlet  
 Coude 90° Netvitec System® "AIR L" sortie taraudée

| CÓDIGO / CODE | PESO / WT (g.) | CÓDIGO / CODE | PESO / WT (g.) | Ø TUBO / PIPE | BRIDA / CLAMP | A   | B   | C  | d    |
|---------------|----------------|---------------|----------------|---------------|---------------|-----|-----|----|------|
| 1N810         | 835            | 1N830         | 600            | 90            | 90            | 159 | 121 | 51 | 3/4" |
| 1N812         | 1.300          | 1N832         | 930            | 110           | 110           | 195 | 144 | 61 | 1"   |

Refuerzo en acero inoxidable A-2 / Stainless steel reinforcement A-2

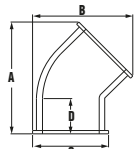
**61N**



**Codo 90° Netvitc System® “AIR L” C/B Salida R/H**  
“AIR L” Netvitc System® 90° elbow W/F  
Coude 90° Netvitc System® “AIR L” A/B

| CÓDIGO / CODE | Ø TUBO / PIPE | BRIDA | PESO / WT (g.) | A   | B   | C  | d    |
|---------------|---------------|-------|----------------|-----|-----|----|------|
| 1N820         | 90            | 90    | 2.031          | 227 | 164 | 51 | 3/4" |
| 1N822         | 110           | 110   | 2.935          | 269 | 188 | 61 | 1"   |

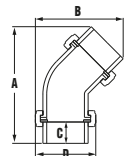
**03N/30N**



**Codo 45° Netvitc System®**  
Netvitc System® 45° elbow  
Coude 45° Netvitc System®

| CÓDIGO / CODE | PESO / WT (g.) | CÓDIGO / CODE | PESO / WT (g.) | Ø TUBO / PIPE | BRIDA / CLAMP | A   | B   | C   | D  |
|---------------|----------------|---------------|----------------|---------------|---------------|-----|-----|-----|----|
| 1N025         | 248            | 1N225         | 186            | 63            | 63            | 125 | 116 | 94  | 36 |
| 1N027         | 641            | 1N227         | 464            | 90            | 90            | 174 | 156 | 121 | 51 |
| 1N028         | 996            | 1N228         | 720            | 110           | 110           | 195 | 178 | 144 | 61 |

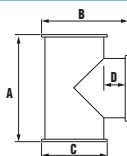
**04N**



**Codo 45° Netvitc System® C/B**  
Netvitc System® 45° elbow W/F  
Coude 45° Netvitc System® A/B

| CÓDIGO / CODE | Ø TUBO / PIPE | BRIDA / CLAMP | PESO / WT (g.) | A   | B   | C  | D   |
|---------------|---------------|---------------|----------------|-----|-----|----|-----|
| 1N035         | 63            | 63            | 788            | 193 | 151 | 36 | 125 |
| 1N037         | 90            | 90            | 1.837          | 274 | 204 | 51 | 164 |
| 1N038         | 110           | 110           | 2.630          | 305 | 297 | 61 | 188 |

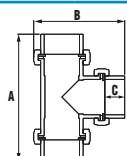
**05N/32N**



**Te 90° Netvitc System®**  
Netvitc System® 90° Tee  
Té 90° Netvitc System®

| CÓDIGO / CODE | PESO / WT (g.) | CÓDIGO / CODE | PESO / WT (g.) | Ø TUBO / PIPE | BRIDA / CLAMP | A   | B   | C   | D   |
|---------------|----------------|---------------|----------------|---------------|---------------|-----|-----|-----|-----|
| 1N055         | 336            | 1N245         | 252            | 63            | 63            | 141 | 116 | 94  | 36  |
| 1N047         | 1.108          | 1N247         | 782            | 90            | 90            | 208 | 159 | 121 | 51  |
| 1N048         | 1.675          | 1N248         | 1.242          | 110           | 110           | 239 | 195 | 144 | 61  |
| 1N049         | 2.320          | 1N249         | 1.671          | 125           | 125           | 277 | 212 | 159 | 69  |
| 1N050         | 3.170          | 1N250         | 1.920          | 140           | 140           | 295 | 236 | 177 | 76  |
| 1N051         | 4.025          | 1N251         | 2.898          | 160           | 160           | 348 | 267 | 201 | 86  |
| 1N052         | 6.550          | 1N252         | 4.716          | 200           | 200           | 408 | 344 | 251 | 106 |

**06N**

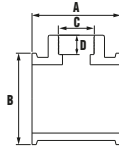


**Te 90° Netvitc System® C/B**  
Netvitc System® 90° tee W/F  
Té 90° Netvitc System® A/B

| CÓDIGO / CODE | Ø TUBO / PIPE | BRIDA / CLAMP | PESO / WT (g.) | A   | B   | C   |
|---------------|---------------|---------------|----------------|-----|-----|-----|
| 1N055         | 63            | 63            | 1.146          | 229 | 170 | 36  |
| 1N057         | 90            | 90            | 2.902          | 328 | 227 | 51  |
| 1N058         | 110           | 110           | 4.126          | 370 | 269 | 61  |
| 1N059         | 125           | 125           | 5.615          | 445 | 309 | 69  |
| 1N060         | 140           | 140           | 7.525          | 497 | 344 | 76  |
| 1N061         | 160           | 160           | 9.545          | 534 | 373 | 86  |
| 1N062         | 200           | 200           | 15.295         | 658 | 480 | 106 |



ÚNICO mercado



50N/53N

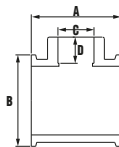


**Te corta R/H Netvite System®**  
 Netvite System® female threaded short tee  
 Té court taraudé Netvite System®

| CÓDIGO / CODE | PESO / WT (g.) | CÓDIGO / CODE | PESO / WT (g.) | Ø TUBO / PIPE | BRIDA / CLAMP | A   | B   | C      | D  |
|---------------|----------------|---------------|----------------|---------------|---------------|-----|-----|--------|----|
| 1N473         | 190            | 1N405         | 190            | 63-1 1/2"     | 63            | 141 | 94  | 1 1/2" | 31 |
| 1N474         | 198            | 1N406         | 198            | 63-2"         | 63            | 141 | 116 | 2"     | 38 |
| 1N477         | 810            | 1N577         | 566            | 90-2"         | 90            | 140 | 121 | 2"     | 38 |
| 1N478         | 895            | 1N578         | 627            | 110-1"        | 110           | 140 | 144 | 1"     | 21 |
| 1N479         | 925            | 1N579         | 647            | 110-1 1/4"    | 110           | 140 | 144 | 1 1/4" | 23 |
| 1N480         | 990            | 1N580         | 690            | 110-1 1/2"    | 110           | 140 | 144 | 1 1/2" | 31 |
| 1N481         | 1.065          | 1N581         | 745            | 110-2"        | 110           | 140 | 144 | 2"     | 38 |



ÚNICO mercado



51N

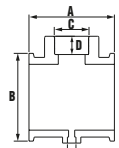


**Te corta encolar Netvite System®**  
 Netvite System® solvent socket short tee  
 Té court à coller Netvite System®

| CÓDIGO / CODE | Ø TUBO / PIPE | BRIDA / CLAMP | PESO / WT (g.) | A   | B   | C  | D  |
|---------------|---------------|---------------|----------------|-----|-----|----|----|
| 1N457         | 90-63         | 90            | 786            | 140 | 121 | 63 | 38 |
| 1N458         | 110-32        | 110           | 870            | 140 | 144 | 32 | 22 |
| 1N459         | 110-40        | 110           | 898            | 140 | 144 | 40 | 26 |
| 1N460         | 110-50        | 110           | 960            | 140 | 144 | 50 | 31 |
| 1N461         | 110-63        | 110           | 1.035          | 140 | 144 | 63 | 38 |



SERIE "AIR"  
 ÚNICO mercado



39N/48N

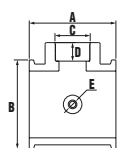


**Te corta R/H Netvite System® "AIR"**  
 "AIR" Netvite System® 90° female threaded short tee  
 Té court taraudé Netvite System® "AIR"

| CÓDIGO / CODE | PESO / WT (g.) | CÓDIGO / CODE | PESO / WT (g.) | Ø TUBO / PIPE | BRIDA / CLAMP | A   | B   | C  | D  | E    |
|---------------|----------------|---------------|----------------|---------------|---------------|-----|-----|----|----|------|
| 1N410         | 830            | 1N420         | 580            | 90-2"         | 90            | 140 | 121 | 2" | 38 | 1/4" |
| 1N411         | 826            | 1N421         | 575            | 90-2"         | 90            | 140 | 121 | 2" | 38 | 1/2" |
| 1N412         | 820            | 1N422         | 570            | 90-2"         | 90            | 140 | 121 | 2" | 38 | 3/4" |
| 1N413         | 1.088          | 1N423         | 765            | 110-2"        | 110           | 140 | 144 | 2" | 38 | 1/4" |
| 1N414         | 1.085          | 1N424         | 760            | 110-2"        | 110           | 140 | 144 | 2" | 38 | 1/2" |
| 1N415         | 1.080          | 1N425         | 755            | 110-2"        | 110           | 140 | 144 | 2" | 38 | 3/4" |



SERIE "AIR L"  
 ÚNICO mercado



40N/47N

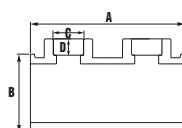


**Te corta R/H Netvite System® "AIR L"**  
 "AIR L" Netvite System® 90° female threaded short tee  
 Té court taraudé Netvite System® "AIR L"

| CÓDIGO / CODE | PESO / WT (g.) | CÓDIGO / CODE | PESO / WT (g.) | Ø TUBO / PIPE | BRIDA / CLAMP | A   | B   | C  | D  | E    |
|---------------|----------------|---------------|----------------|---------------|---------------|-----|-----|----|----|------|
| 1N540         | 830            | 1N430         | 575            | 90-2"         | 90            | 140 | 121 | 2" | 38 | 1/4" |
| 1N541         | 826            | 1N431         | 570            | 90-2"         | 90            | 140 | 121 | 2" | 38 | 1/2" |
| 1N542         | 820            | 1N432         | 765            | 90-2"         | 90            | 140 | 121 | 2" | 38 | 3/4" |
| 1N543         | 1.088          | 1N433         | 760            | 110-2"        | 110           | 140 | 144 | 2" | 38 | 1/4" |
| 1N544         | 1.085          | 1N434         | 755            | 110-2"        | 110           | 140 | 144 | 2" | 38 | 1/2" |
| 1N545         | 1.080          | 1N435         | 750            | 110-2"        | 110           | 140 | 144 | 2" | 38 | 3/4" |



ÚNICO mercado



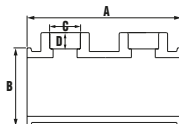
42N/49N



**Te doble Netvite System® salida R/H**  
 Netvite System® female threaded double tee  
 Té double Netvite System® taraudé

| CÓDIGO / CODE | PESO / WT (g.) | CÓDIGO / CODE | PESO / WT (g.) | Ø TUBO / PIPE | BRIDA / CLAMP | A   | B   | C  | D  |
|---------------|----------------|---------------|----------------|---------------|---------------|-----|-----|----|----|
| 1N700         | 1.580          | 1N710         | 1.100          | 90-2"         | 90            | 286 | 121 | 2" | 38 |
| 1N704         | 2.077          | 1N714         | 1.450          | 110-2"        | 110           | 286 | 144 | 2" | 38 |

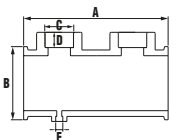
43N



**Te doble Netvitic System® salida encolar**  
Netvitic System® solvent socket outlet double tee  
Te double Netvitic System® á coller

| CÓDIGO / CODE | Ø TUBO / PIPE | BRIDA / CLAMP | PESO / WT (g.) | A   | B   | C  | D  |
|---------------|---------------|---------------|----------------|-----|-----|----|----|
| 1N720         | 90-63         | 90            | 1.533          | 286 | 121 | 63 | 38 |
| 1N724         | 110-63        | 110           | 2.018          | 286 | 144 | 63 | 38 |

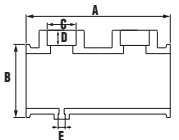
45N/57N



**Te doble "AIR" Netvitic System® salida R/H**  
"AIR" Netvitic System® female threaded double tee  
Te double "AIR" Netvitic System® taraudé

| CÓDIGO / CODE | PESO / WT (g.) | CÓDIGO / CODE | PESO / WT (g.) | Ø TUBO / PIPE | BRIDA / CLAMP | A   | B   | C  | D  | E    |
|---------------|----------------|---------------|----------------|---------------|---------------|-----|-----|----|----|------|
| 1N730         | 1.585          | 1N740         | 1.140          | 90-2"         | 90            | 286 | 121 | 2" | 38 | 1/4" |
| 1N731         | 1.590          | 1N741         | 1.130          | 90-2"         | 90            | 286 | 121 | 2" | 38 | 1/2" |
| 1N732         | 1.595          | 1N742         | 1.125          | 90-2"         | 90            | 286 | 121 | 2" | 38 | 3/4" |
| 1N733         | 2.080          | 1N743         | 1.460          | 110-2"        | 110           | 286 | 144 | 2" | 38 | 1/4" |
| 1N734         | 2.085          | 1N744         | 1.465          | 110-2"        | 110           | 286 | 144 | 2" | 38 | 1/2" |
| 1N735         | 2.090          | 1N745         | 1.470          | 110-2"        | 110           | 286 | 144 | 2" | 38 | 3/4" |

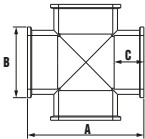
46N



**Te doble "AIR" Netvitic System® salida encolar**  
"AIR" Netvitic System® solvent socket outlet double tee  
Te double "AIR" Netvitic System® sortie á coller

| CÓDIGO / CODE | Ø TUBO / PIPE | BRIDA / CLAMP | PESO / WT (g.) | A   | B   | C  | D  | E    |
|---------------|---------------|---------------|----------------|-----|-----|----|----|------|
| 1N750         | 90-63         | 90            | 1.595          | 286 | 121 | 63 | 38 | 1/4" |
| 1N751         | 90-63         | 90            | 1.600          | 286 | 121 | 63 | 38 | 1/2" |
| 1N752         | 90-63         | 90            | 1.605          | 286 | 121 | 63 | 38 | 3/4" |
| 1N753         | 110-63        | 110           | 2.090          | 286 | 144 | 63 | 38 | 1/4" |
| 1N754         | 110-63        | 110           | 2.095          | 286 | 144 | 63 | 38 | 1/2" |
| 1N755         | 110-63        | 110           | 2.100          | 286 | 144 | 63 | 38 | 3/4" |

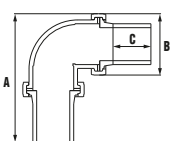
41N/44N



**Cruz 90° Netvitic System®**  
90° Cross Netvitic System®  
Croix 90° Netvitic System®

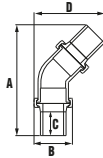
| CÓDIGO / CODE | PESO / WT (g.) | CÓDIGO / CODE | PESO / WT (g.) | Ø TUBO / PIPE | BRIDA / CLAMP | A   | B   | C   |
|---------------|----------------|---------------|----------------|---------------|---------------|-----|-----|-----|
| 1N167         | 1.220          | 1N367         | 879            | 90            | 90            | 208 | 121 | 51  |
| 1N168         | 1.845          | 1N368         | 1.329          | 110           | 110           | 239 | 144 | 61  |
| 1N169         | 2.552          | 1N369         | 1.840          | 125           | 125           | 277 | 159 | 69  |
| 1N170         | 2.870          | 1N370         | 3.400          | 140           | 140           | 305 | 176 | 75  |
| 1N171         | 4.425          | 1N371         | 3.185          | 160           | 160           | 348 | 201 | 86  |
| 1N172         | 7.205          | 1N372         | 5.190          | 200           | 200           | 408 | 251 | 106 |

27N



**Codo 90° Netvitic System® C/B salida PE**  
Netvitic System® 90° elbow W/F, PE outlet  
Coude 90° Netvitic System® A/B

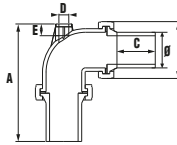
| CÓDIGO / CODE | Ø TUBO / PIPE | BRIDA / CLAMP | PESO / WT (g.) | A   | B   | C   |
|---------------|---------------|---------------|----------------|-----|-----|-----|
| 1N215         | 63            | 63            | 832            | 248 | 125 | 89  |
| 1N217         | 90            | 90            | 2.021          | 302 | 164 | 100 |
| 1N218         | 110           | 110           | 2.848          | 343 | 188 | 102 |
| 1N219         | 125           | 125           | 4.076          | 388 | 203 | 135 |
| 1N220         | 140           | 140           | 4.796          | 426 | 224 | 125 |
| 1N221         | 160           | 160           | 6.587          | 454 | 251 | 122 |
| 1N222         | 200           | 200           | 11.310         | 538 | 297 | 132 |



**Codo 45° Netvite System® C/B salida PE**  
 Netvite System® 45° elbow W/F, PE outlet  
 Coude 45° Netvite System® A/B

**31N**

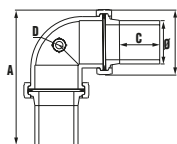
| CÓDIGO / CODE | Ø TUBO / PIPE | BRIDA / CLAMP | PESO / WT (g.) | A   | B   | C   | D   |
|---------------|---------------|---------------|----------------|-----|-----|-----|-----|
| 1N235         | 63            | 63            | 626            | 321 | 202 | 89  | 125 |
| 1N237         | 90            | 90            | 1.896          | 450 | 164 | 100 | 256 |
| 1N238         | 110           | 110           | 2.652          | 476 | 188 | 102 | 302 |



**Codo 90° Netvite System® "AIR" C/B salida PE**  
 "AIR" Netvite System® 90° elbow W/F, PE outlet  
 Coude 90° Netvite System® "AIR" A/B

**29N**

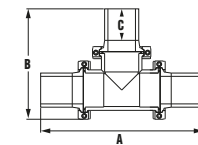
| CÓDIGO / CODE | Ø TUBO / PIPE | BRIDA / CLAMP | PESO / WT (g.) | A   | B   | C   | D    | E  |
|---------------|---------------|---------------|----------------|-----|-----|-----|------|----|
| 1N315         | 63            | 63            | 843            | 260 | 152 | 89  | 1/2" | 16 |
| 1N317         | 90            | 90            | 2.036          | 248 | 164 | 100 | 3/4" | 19 |
| 1N319         | 110           | 110           | 2.906          | 278 | 188 | 102 | 1"   | 22 |
| 1N320         | 125           | 125           | 4.140          | 421 | 203 | 135 | 2"   | 38 |
| 1N322         | 160           | 160           | 7.005          | 482 | 251 | 122 | 2"   | 38 |
| 1N323         | 200           | 200           | 11.930         | 727 | 297 | 132 | 2"   | 38 |



**Codo 90° Netvite System® "AIR L" R/H, C/B salida PE**  
 "AIR L" Netvite System® 90° elbow W/F, PE outlet  
 Coude 90° Netvite System® "AIR L" A/B

**63N**

| CÓDIGO / CODE | Ø TUBO / PIPE | BRIDA / CLAMP | PESO / WT (g.) | A   | B   | C   | D    |
|---------------|---------------|---------------|----------------|-----|-----|-----|------|
| 1N840         | 90            | 90            | 2.041          | 302 | 164 | 100 | 3/4" |
| 1N842         | 110           | 110           | 2.865          | 343 | 188 | 102 | 1"   |

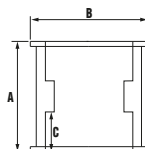


**Te 90° Netvite System® C/B salida PE**  
 Netvite System® 90° tee W/F, PE outlet  
 Té 90° Netvite System® A/B

**33N**

| CÓDIGO / CODE | Ø TUBO / PIPE | BRIDA / CLAMP | PESO / WT (g.) | A   | B   | C   |
|---------------|---------------|---------------|----------------|-----|-----|-----|
| 1N255         | 63            | 63            | 1.224          | 384 | 248 | 89  |
| 1N257         | 90            | 90            | 2.930          | 490 | 310 | 100 |
| 1N258         | 110           | 110           | 4.140          | 531 | 351 | 102 |
| 1N259         | 125           | 125           | 5.925          | 633 | 400 | 135 |
| 1N260         | 140           | 140           | 6.820          | 667 | 428 | 125 |
| 1N261         | 160           | 160           | 9.635          | 706 | 456 | 122 |
| 1N262         | 200           | 200           | 16.720         | 818 | 563 | 132 |

**09N/34N**

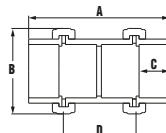


**Manguito Netvite System®**  
 Netvite System® coupling  
 Manchon Netvite System®



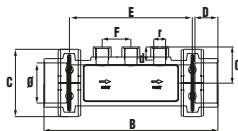
| CÓDIGO / CODE | PESO / WT (g.) | CÓDIGO / CODE | PESO / WT (g.) | Ø TUBO / PIPE | BRIDA / CLAMP | A   | B   | C  |
|---------------|----------------|---------------|----------------|---------------|---------------|-----|-----|----|
| 1N067         | 697            | 1N267         | 523            | 90            | 90            | 150 | 121 | 51 |
| 1N068         | 996            | 1N268         | 747            | 110           | 110           | 170 | 144 | 61 |

**10N**



**Manguito Netvite System® C/B**  
 Netvite System® coupling W/F  
 Manchon Netvite System® A/B

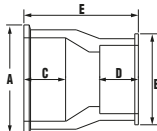
| CÓDIGO / CODE | Ø TUBO / PIPE | BRIDA / CLAMP | PESO / WT (g.) | A   | B   | C  | D   |
|---------------|---------------|---------------|----------------|-----|-----|----|-----|
| 1N077         | 90            | 90            | 1.893          | 270 | 164 | 51 | 150 |
| 1N078         | 110           | 110           | 2.630          | 302 | 188 | 61 | 170 |



**Te SNS® visor portasondas R/H**  
Electrodes holder sight glass SNS® tee f/t  
Té SNS® avec regard porte sonde tar/fem

64N

| CÓDIGO / CODE | Ø TUBO / PIPE | BRIDA / CLAMP | PESO / WT (g.) | A   | B   | C  | D   | E  | F  | r    | d  |
|---------------|---------------|---------------|----------------|-----|-----|----|-----|----|----|------|----|
| 1N500         | 50            | 63            | 920            | 298 | 125 | 31 | 192 | 45 | 57 | 1/2" | 16 |
| 1N501         | 63            | 63            | 875            | 272 | 125 | 36 | 192 | 45 | 57 | 1/2" | 16 |
| 1N502         | 75            | 63            | 1.055          | 326 | 125 | 42 | 192 | 45 | 57 | 1/2" | 16 |
| 1N503         | 90            | 90            | 2.170          | 371 | 164 | 51 | 260 | 55 | 76 | 1/2" | 16 |

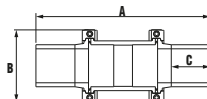


**Reducción cónica Netvitic System®**  
Netvitic System® Conical reduction  
Réduction conique Netvitic System®

52N/54N



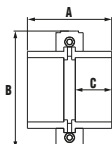
| CÓDIGO / CODE | PESO / WT (g.) | CÓDIGO / CODE | PESO / WT (g.) | Ø TUBO / PIPE | BRIDA / CLAMP | A   | B   | C  | D  | E   |
|---------------|----------------|---------------|----------------|---------------|---------------|-----|-----|----|----|-----|
| 1N197         | 550            | 1N397         | 396            | 110-90        | 110-90        | 144 | 121 | 61 | 51 | 151 |
| 1N198         | 690            | 1N398         | 497            | 125-90        | 125-90        | 159 | 121 | 69 | 51 | 163 |
| 1N199         | 890            | 1N399         | 640            | 125-110       | 125-110       | 159 | 144 | 69 | 61 | 172 |



**Manguito Netvitic System® C/B salida PE**  
Netvitic System® coupling W/F, PE outlet  
Manchon Netvitic System® A/B

35N

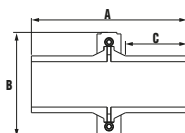
| CÓDIGO / CODE | Ø TUBO / PIPE | BRIDA / CLAMP | PESO / WT (g.) | A   | B   | C   |
|---------------|---------------|---------------|----------------|-----|-----|-----|
| 1N277         | 90            | 90            | 1.936          | 426 | 164 | 100 |
| 1N278         | 110           | 110           | 2.652          | 456 | 188 | 102 |



**Enlace 3 piezas encolar Netvitic System®**  
Netvitic System® Union, solvent socket  
Raccord 3 pièces Netvitic System® á collar

11N/13N

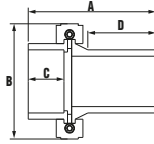
| CÓDIGO / CODE | Ø TUBO / PIPE | CÓDIGO / CODE BS | Ø TUBO / PIPE BS | BRIDA / CLAMP | PESO / WT (g.) | A   | B   | C   |
|---------------|---------------|------------------|------------------|---------------|----------------|-----|-----|-----|
| 10371         | 40            | 10333            | 1 1/4"           | 63            | 326            | 102 | 125 | 28  |
| 10372         | 50            | 10334            | 1 1/2"           | 63            | 374            | 106 | 125 | 31  |
| 10373         | 63            | 10335            | 2"               | 63            | 366            | 80  | 125 | 36  |
| 10374         | 75            | 10336            | 2 1/2"           | 75            | 456            | 94  | 138 | 44  |
| 10327         | 90            | 10337            | 3"               | 90            | 839            | 120 | 164 | 51  |
| 10328         | 110           | 10338            | 4"               | 110           | 1.223          | 132 | 188 | 61  |
| 10329         | 125           | -                | -                | 125           | 1.612          | 162 | 203 | 69  |
| 10330         | 140           | 10340            | 5"               | 140           | 2.306          | 176 | 224 | 78  |
| 10331         | 160           | 10341            | 6"               | 160           | 2.840          | 180 | 251 | 86  |
| 10332         | 200           | 10342            | 8"               | 200           | 4.587          | 244 | 297 | 106 |
| 10375         | 225           | -                | -                | 200           | 5.647          | 330 | 297 | 120 |



**Enlace 3 piezas PE-PE**  
Netvitic System® Union PE-PE  
Raccord 3 pièces Netvitic System® PE-PE

12N

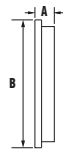
| CÓDIGO / CODE | Ø TUBO / PIPE | BRIDA / CLAMP | PESO / WT (g.) | A   | B   | C   |
|---------------|---------------|---------------|----------------|-----|-----|-----|
| 10344         | 50            | 63            | 374            | 254 | 125 | 56  |
| 10345         | 63            | 63            | 446            | 244 | 125 | 89  |
| 10346         | 75            | 75            | 608            | 256 | 138 | 91  |
| 10347         | 90            | 90            | 1.075          | 276 | 164 | 100 |
| 10348         | 110           | 110           | 1.521          | 286 | 188 | 102 |
| 10349         | 125           | 125           | 2.250          | 350 | 203 | 135 |
| 10350         | 140           | 140           | 2.430          | 352 | 224 | 125 |
| 10351         | 160           | 160           | 3.646          | 352 | 251 | 122 |
| 10352         | 200           | 200           | 6.757          | 404 | 297 | 132 |
| 10353         | 225           | 200           | 5.275          | 408 | 297 | 143 |



14N

**Enlace 3 piezas PE-encolar**  
**Netvitc System® Union PE-solvent socket**  
**Raccord 3 pièces Netvitc System® PE- à coller**

| CÓDIGO / CODE | Ø TUBO / PIPE | BRIDA / CLAMP | PESO / WT (g.) | A   | B   | C   | D   |
|---------------|---------------|---------------|----------------|-----|-----|-----|-----|
| 10354         | 50            | 63            | 374            | 183 | 125 | 28  | 56  |
| 10355         | 63            | 63            | 406            | 165 | 125 | 36  | 89  |
| 10356         | 75            | 75            | 532            | 178 | 138 | 44  | 91  |
| 10357         | 90            | 90            | 957            | 201 | 164 | 52  | 100 |
| 10358         | 110           | 110           | 1.372          | 212 | 188 | 61  | 102 |
| 10359         | 125           | 125           | 1.931          | 259 | 203 | 70  | 135 |
| 10360         | 140           | 140           | 2.368          | 267 | 224 | 78  | 125 |
| 10361         | 160           | 160           | 3.243          | 269 | 251 | 86  | 122 |
| 10362         | 200           | 200           | 5.672          | 323 | 297 | 106 | 132 |
| 10363         | 225           | 200           | 5.461          | 369 | 297 | 120 | 143 |



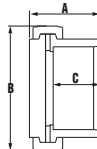
07N/36N



**Tapón Netvitc System®**  
**Netvitc System® cap**  
**Bouchon Netvitc System®**

| CÓDIGO / CODE | PESO / WT (g.) | CÓDIGO / CODE | PES / WT (grs) | Ø TUBO / PIPE | BRIDA / CLAMP | A  | B   |
|---------------|----------------|---------------|----------------|---------------|---------------|----|-----|
| 1N084         | 55             | 1N284         | 42             | 50*           | 50            | 20 | 74  |
| 1N085         | 105            | 1N285         | 76             | 63*           | 63            | 22 | 92  |
| -             | -              | 1N283         | 77             | 63            | 63            | 24 | 92  |
| 1N087         | 244            | 1N287         | 176            | 90            | 90            | 25 | 121 |
| 1N088         | 351            | 1N288         | 254            | 110           | 110           | 25 | 144 |
| 1N089         | 399            | 1N289         | 288            | 125           | 125           | 25 | 159 |
| 1N090         | 505            | 1N290         | 365            | 140           | 140           | 27 | 177 |
| 1N091         | 840            | 1N291         | 475            | 160           | 160           | 29 | 201 |
| 1N092         | 1.494          | 1N292         | 1.080          | 200           | 200           | 34 | 251 |

\*Solo para colectores SNS / Only for SNS® manifolds.

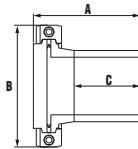


08N



**Tapón Netvitc System® C/B**  
**Netvitc System® cap W/F**  
**Bouchon Netvitc System® A/B**

| CÓDIGO / CODE | Ø TUBO / PIPE | BRIDA / CLAMP | PESO / WT (g.) | A   | B   | C   |
|---------------|---------------|---------------|----------------|-----|-----|-----|
| 1N097         | 90            | 90            | 842            | 91  | 164 | 51  |
| 1N098         | 110           | 110           | 1.168          | 97  | 188 | 61  |
| 1N099         | 125           | 125           | 1.498          | 112 | 203 | 70  |
| 1N100         | 140           | 140           | 2.291          | 121 | 224 | 76  |
| 1N101         | 160           | 160           | 2.500          | 125 | 251 | 86  |
| 1N102         | 200           | 200           | 4.411          | 158 | 297 | 106 |
| 1N103         | 225           | 200           | 4.941          | 201 | 297 | 120 |



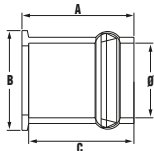
37N



**Tapón Netvitc System® C/B salida PE**  
**Netvitc System® cap W/F, PE outlet**  
**Bouchon Netvitc System® A/B**

| CÓDIGO / CODE | Ø TUBO / PIPE | BRIDA / CLAMP | PESO / WT (g.) | A   | B   | C   |
|---------------|---------------|---------------|----------------|-----|-----|-----|
| 1N295         | 63            | 63            | 400            | 147 | 125 | 89  |
| 1N297         | 90            | 90            | 892            | 166 | 164 | 100 |
| 1N298         | 110           | 110           | 1.220          | 171 | 188 | 102 |
| 1N299         | 125           | 125           | 1.705          | 203 | 203 | 135 |
| 1N300         | 140           | 140           | 1.878          | 206 | 224 | 125 |
| 1N301         | 160           | 160           | 2.720          | 208 | 251 | 122 |
| 1N302         | 200           | 200           | 5.082          | 239 | 297 | 132 |
| 1N303         | 225           | 200           | 4.341          | 240 | 297 | 143 |

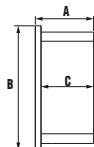
65N



**Conexión Netvitc System® con junta elástica**  
Netvitc System® rubber ring adaptor  
Connexion Netvitc System® avec joint élastique

| CÓDIGO / CODE | Ø TUBO / PIPE | BRIDA / CLAMP | PESO / WT (g.) | A   | B   | C   |
|---------------|---------------|---------------|----------------|-----|-----|-----|
| 1N766         | 160           | 160           | 1.605          | 125 | 201 | 119 |
| 1N767         | 200           | 200           | 2.455          | 135 | 251 | 129 |

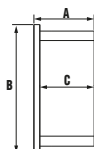
19N



**Conexión encolar-Netvitc System®**  
Netvitc System® adaptor  
Porte bride Netvitc System®

| CÓDIGO / CODE | Ø TUBO / PIPE | BRIDA / CLAMP | PESO / WT (g.) | A   | B   | C   |
|---------------|---------------|---------------|----------------|-----|-----|-----|
| 1N977         | 63            | 63            | 114            | 40  | 94  | 36  |
| 1N980         | 75            | 75            | 151            | 47  | 101 | 44  |
| 1N981         | 90            | 90            | 241            | 60  | 121 | 52  |
| 1N983         | 110           | 110           | 406            | 66  | 144 | 61  |
| 1N986         | 125           | 125           | 513            | 81  | 159 | 70  |
| 1N988         | 140           | 140           | 855            | 88  | 176 | 78  |
| 1N990         | 160           | 160           | 997            | 90  | 201 | 86  |
| 1N992         | 200           | 200           | 1.670          | 118 | 251 | 106 |

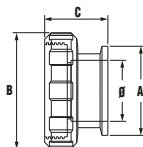
20N



**Conexión reducido enc. Netvitc System®**  
Netvitc System® reducing adaptor  
Porte bride réduit Netvitc System®

| CÓDIGO / CODE | Ø TUBO / PIPE | BRIDA / CLAMP | PESO / WT (g.) | A   | B   | C   |
|---------------|---------------|---------------|----------------|-----|-----|-----|
| 1N975         | 40            | 63            | 94             | 51  | 92  | 28  |
| 1N976         | 50            | 63            | 118            | 53  | 92  | 31  |
| 1N979         | 75            | 63            | 148            | 65  | 92  | 42  |
| 1N978         | 63            | 75            | 186            | 60  | 101 | 41  |
| 1N982         | 90            | 125           | 438            | 59  | 159 | 52  |
| 1N984         | 110           | 125           | 475            | 67  | 159 | 62  |
| 1N985         | 110           | 160           | 804            | 66  | 201 | 62  |
| 1N987         | 125           | 160           | 814            | 75  | 201 | 69  |
| 1N989         | 140           | 160           | 871            | 80  | 201 | 75  |
| 1N991         | 200           | 160           | 1.801          | 150 | 201 | 107 |
| 1N993         | 225           | 200           | 2.200          | 161 | 251 | 120 |

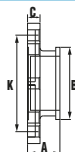
59N



**Conexión Netvitc System® con válvula de bola**  
Netvitc System® ball valve outlet  
Sortie Netvitc System®/R. à boule

| CÓDIGO / CODE | Ø TUBO / PIPE | BRIDA / CLAMP | PESO / WT (g.) | A   | B   | C  |
|---------------|---------------|---------------|----------------|-----|-----|----|
| 11N806        | 63            | 63            | 259            | 92  | 116 | 62 |
| 11N807        | 75            | 75            | 575            | 101 | 150 | 70 |
| 11N808        | 90            | 90            | 981            | 121 | 178 | 83 |
| 11N809        | 110           | 110           | 1.370          | 144 | 210 | 89 |
| 11N810        | 125           | 125           | 1.480          | 159 | 230 | 81 |

25N/38N

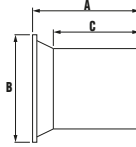


**Conexión bridas PVC- Netvitc System®**  
Netvitc System® transition flange  
Bride de transition Netvitc System®

| CÓDIGO / CODE | PESO / WT (g.) | CÓDIGO / CODE | PESO / WT (g.) | Ø TUBO / PIPE | BRIDA / CLAMP | A   | B   | C  | K       |
|---------------|----------------|---------------|----------------|---------------|---------------|-----|-----|----|---------|
| 1N137         | 895            | 1N337         | 645            | 90            | 90            | 89  | 121 | 24 | 146-160 |
| 1N138         | 1.222          | 1N338         | 880            | 110           | 110           | 92  | 144 | 26 | 178-190 |
| 1N139         | 1.450          | 1N339         | 1.045          | 125           | 125           | 95  | 159 | 27 | 190     |
| 1N140         | 1.910          | 1N340         | 1.375          | 125-140       | 140           | 98  | 177 | 29 | 210-216 |
| 1N141         | 2.245          | 1N341         | 1.616          | 160           | 160           | 102 | 201 | 30 | 235-241 |

K= distancia entre tornillos (mm)/Distance between bolts (mm)

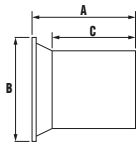
21N



**Conexión PE Netvitic System®**  
 Netvitic System® PE adaptor  
 Porte bride PE Netvitic System®

| CÓDIGO / CODE | Ø TUBO / PIPE | BRIDA / CLAMP | PESO / WT (g.) | A   | B   | C   |
|---------------|---------------|---------------|----------------|-----|-----|-----|
| 1N951         | 63            | 63            | 154            | 119 | 92  | 89  |
| 1N953         | 75            | 75            | 227            | 125 | 101 | 91  |
| 1N954         | 90            | 90            | 359            | 135 | 121 | 100 |
| 1N956         | 110           | 110           | 555            | 140 | 144 | 102 |
| 1N958         | 125           | 125           | 832            | 172 | 159 | 135 |
| 1N959         | 140           | 140           | 917            | 173 | 177 | 125 |
| 1N961         | 160           | 160           | 1.400          | 173 | 201 | 122 |
| 1N962         | 200           | 200           | 2.755          | 199 | 251 | 132 |

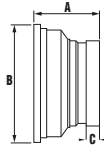
22N



**Conexión reducido PE Netvitic System®**  
 Netvitic System® reducing adaptor PE  
 Porte bride réduit PE Netvitic System®

| CÓDIGO / CODE | Ø TUBO / PIPE | BRIDA / CLAMP | PESO / WT (g.) | A   | B   | C   |
|---------------|---------------|---------------|----------------|-----|-----|-----|
| 1N950         | 50            | 63            | 146            | 124 | 92  | 56  |
| 1N952         | 63            | 75            | 223            | 130 | 101 | 64  |
| 1N955         | 90            | 125           | 534            | 140 | 159 | 100 |
| 1N957         | 110           | 125           | 609            | 141 | 159 | 101 |
| 1N960         | 140           | 160           | 1.416          | 190 | 201 | 98  |
| 1N963         | 225           | 200           | 2.014          | 200 | 251 | 143 |

17N

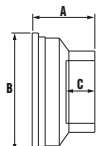


**Conexión sistema ranurado Netvitic System®**  
 Netvitic System® adaptor  
 Porte bride Netvitic System®



| CÓDIGO / CODE | Ø TUBO / PIPE | BRIDA / CLAMP | PESO / WT (g.) | A  | B   | C  |
|---------------|---------------|---------------|----------------|----|-----|----|
| 1N936         | 2"            | 63            | 155            | 45 | 94  | 16 |
| 1N938         | 3"            | 90            | 224            | 64 | 121 | 16 |
| 1N940         | 3"            | 125           | 363            | 86 | 159 | 16 |
| 1N939         | 4"            | 110           | 320            | 90 | 121 | 18 |
| 1N941         | 4"            | 125           | 379            | 94 | 159 | 18 |

18N



**Conexión R/H- Netvitic System®**  
 Netvitic System® adaptor female threaded  
 Porte bride taraudée Netvitic System®



| CÓDIGO / CODE | Ø TUBO / PIPE | BRIDA / CLAMP | PESO / WT (g.) | A  | B   | C  |
|---------------|---------------|---------------|----------------|----|-----|----|
| 1N918         | 1"            | 63            | 102            | 40 | 94  | 36 |
| 1N919         | 1"            | 90            | 205            | 56 | 121 | 22 |
| 1N920         | 2"            | 90            | 225            | 58 | 121 | 38 |
| 1N921         | 3"            | 90            | 275            | 70 | 121 | 51 |
| 1N924         | 2"            | 110           | 385            | 65 | 144 | 38 |
| 1N926         | 3"            | 110           | 450            | 78 | 144 | 51 |
| 1N927         | 4"            | 110           | 470            | 86 | 144 | 62 |
| 1N929         | 2"            | 125           | 500            | 82 | 159 | 38 |
| 1N930         | 2 1/2"        | 125           | 460            | 86 | 159 | 44 |
| 1N931         | 3"            | 125           | 396            | 86 | 159 | 51 |
| 1N932         | 4"            | 125           | 477            | 86 | 159 | 62 |
| 1N933         | 3"            | 140           | 591            | 86 | 177 | 51 |
| 1N934         | 3"            | 160           | 686            | 86 | 201 | 51 |

## HIDROTEN, S.A.

Polig. I. Plá Vallonga, c/ Agua, 28

03006 ALICANTE (España)

Telf. 965 11 42 82

Fax: 965 11 48 62

### I INTERNACIONALES I

Telf. +34 965 11 42 82

Fax: +34 965 11 48 62

Telf. Información Técnica:

+34 966 105 888

[www.hidroten.es](http://www.hidroten.es)

### I E-mails I

[comercial@hidroten.es](mailto:comercial@hidroten.es)

[export@hidroten.es](mailto:export@hidroten.es)

[administracion@hidroten.es](mailto:administracion@hidroten.es)

[tecnico@hidroten.es](mailto:tecnico@hidroten.es)

[publicidad@hidroten.es](mailto:publicidad@hidroten.es)

[prescripcion@hidroten.es](mailto:prescripcion@hidroten.es)



¡Síguenos en redes sociales!

