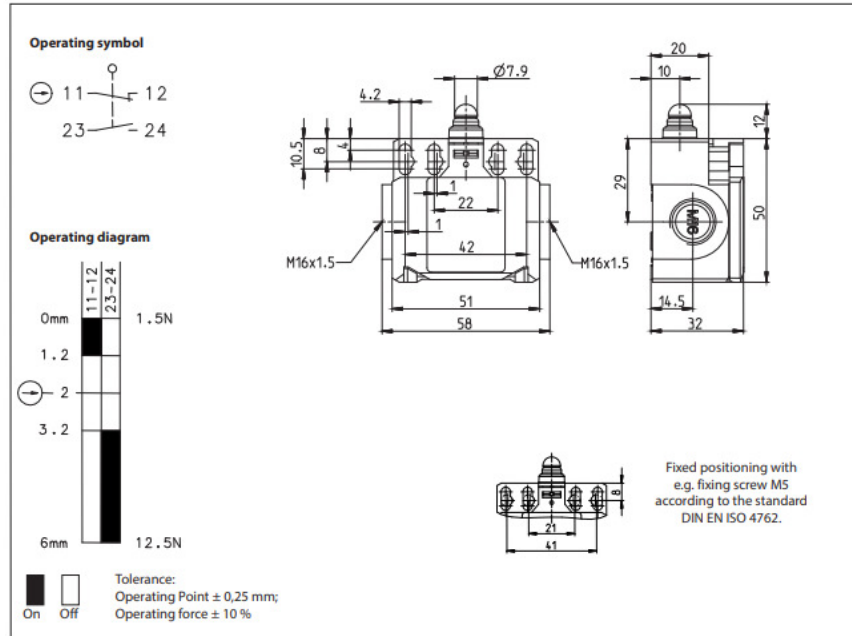


Plastic bodied limit switch

| | |
|-------------|----------------|
| Description | Article number |
|-------------|----------------|



| Mechanical data | |
|--------------------------|--|
| Enclosure | Thermoplastic, glass fibre reinforced |
| Cover | Thermoplastic, glass fibre reinforced |
| Actuator | plunger (Thermoplastic) |
| Ambient air temperature | -30 °C ... +80 °C |
| Contact type | 1 NC, 1 NO (Zb) |
| Mechanical life | 10 x 10 ⁶ operating cycles |
| Switching frequency | ≤ 100 / min. |
| Assembly | 2 x M4 / 2 x M5 / 2 x M3 front mounting |
| Connection | 4 screw connections (M3,5) |
| Conductor cross-sections | Solid: 0,5 ... 1,5 mm ² Litz wire with ferrules: 0,5 ... 1,5 mm ² |
| Cable entrance | 2 x M16 x 1,5 |
| Weight | $\approx 0,08$ kg |
| Installation position | operator definable |
| Protection type | IP65 acc. to IEC/EN 60529; DIN VDE 0470 T1 |

| ID for safety engineering | |
|---------------------------|-----------------------------|
| B10d | 20 x 10 ⁶ cycles |

| Actuation | |
|--|--|
| The push bolt actuator is mainly intended to be actuated along its axis. Side actuation will considerably reduce switch life. | |

| Standards | |
|--|--|
| VDE 0660 T100, DIN EN 60947-1, IEC 60947-1 | |
| VDE 0660 T200, DIN EN 60947-5-1, IEC 60947-5-1 | |
| DIN EN ISO 13849-1 | |

| EU Conformity | |
|------------------------------|--|
| acc. to directive 2014/35/EU | |

| Approvals | |
|-----------------|--|
| CSA, A300, Q300 | |
| CCC | |

| Notes | |
|---|--|
| The degree of protection specified (IP code) applies only to a properly closed protective guard and the use of an equivalent cable gland with adequate cable. | |