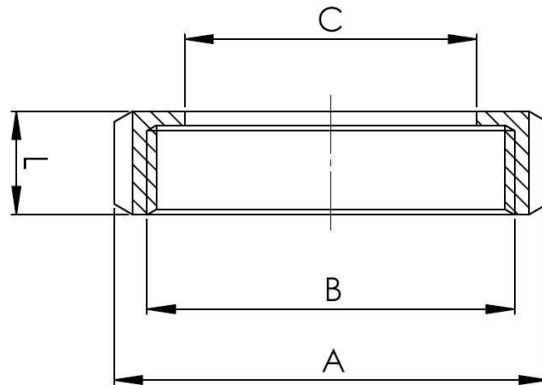


# TUERCA ROSCADA DIN 11851

## DIN 11851 THREADED NUT



### CARACTERÍSTICAS BÁSICAS

- Material acero inoxidable AISI 304.
- Según norma DIN 11851.
- Acabado: Pulido.
- Rosca de acuerdo a DIN 405.

#### Observaciones:

Dada la complejidad, variedad y gran cantidad de especificaciones particulares de cada instalación, en conjunción con la existencia de diversos factores que pueden afectar a las condiciones de trabajo y naturaleza del producto, es responsabilidad del usuario final realizar los ensayos necesarios para garantizar el correcto funcionamiento del producto en cada aplicación concreta. La instalación del producto deberá realizarse y mantenerse siguiendo códigos de buena práctica y/o estándares existentes.

### BASIC FEATURES

- Stainless Steel AISI 304.
- According to DIN 11851 standard.
- Ending: Polish.
- Thread according to DIN 405 standard.

#### Remarks:

Due to the complexity, variety and large number of particular specifications for each installation, along with the existence of diverse factors which can affect the working conditions and nature of the product, it is the responsibility of the end-user to carry out the necessary tests to ensure the proper functioning of the product in any specific application. Product installation must be carried out and maintained following the good practice codes and/or updated technical standards.

### INFORMACIÓN TÉCNICA - TECHNICAL INFORMATION

| DN  | COD.     | DIMENSIONES - DIMENSIONS |           |           |                 |           | Peso aprox.<br>Weight approx.<br>(g) |
|-----|----------|--------------------------|-----------|-----------|-----------------|-----------|--------------------------------------|
|     |          | A<br>(mm)                | B<br>(mm) | C<br>(mm) | Ranuras - Slots | L<br>(mm) |                                      |
| 15  | I3744003 | 44                       | 34        | 21        | 4               | 18        | 82                                   |
| 20  | I3744004 | 54                       | 44        | 31        | 4               | 20        | 128                                  |
| 25  | I3744005 | 63                       | 52        | 36        | 4               | 21        | 180                                  |
| 32  | I3744006 | 70                       | 58        | 42        | 4               | 21        | 209                                  |
| 40  | I3744007 | 78                       | 65        | 49        | 4               | 21        | 253                                  |
| 50  | I3744008 | 92                       | 78        | 62        | 4               | 22        | 346                                  |
| 65  | I3744009 | 112                      | 95        | 80        | 6               | 25        | 551                                  |
| 80  | I374400A | 127                      | 110       | 94        | 6               | 29        | 796                                  |
| 100 | I374400C | 148                      | 130       | 115       | 6               | 31        | 1.047                                |
| 125 | I374400D | 178                      | 160       | 138       | 6               | 35        | 1.440                                |
| 150 | I374400E | 210                      | 190       | 164       | 6               | 40        | 2.250                                |

Nota : Debido al constante desarrollo de nuestros productos, los datos suministrados pueden ser alterados sin previo aviso.

Note : Due to the continuous development of our products, specifications may be changed without notification at any time.

Rev.1-04.20



Polígono Industrial ATUSA - Agurain S/N - 01200 Salvatierra (Alava) España  
Tel.: (+34) 945 18 00 00 Fax : (+34) 945 30 01 53 e-mail: ventas@atusa.es  
[www.atusa.es](http://www.atusa.es)

